

**AirTrim**

PNEUMATIC CONVEYING SYSTEMS

Since 1989

# PNEUMATIC CONVEYING OF DUST & MATERIAL WASTE FOR TISSUE & PAPER MILLS



**To Today's Self-Sustaining, Eco-Friendly Mill**

1701 Dalton Dr. • New Carlisle Ohio 45344

Tel : (888) 247-8746

Email: [sales@airtrim.com](mailto:sales@airtrim.com)

[www.airtrim.com](http://www.airtrim.com)

## Your single source for Trim, Dust and Waste Removal Systems

AirTrim, Inc. designs and fabricates pneumatic conveying systems. These systems use air to move or transport your product or waste component from a source to a desired receptacle.

### Built to Last

Each pneumatic system is engineered for your specific application by analyzing your objectives and process requirements. Then, using quality materials and rugged construction, each system is designed, fabricated and installed for years of continual use.

### Performance Guarantee

AirTrim backs its design and installation of systems with a straight, to the point, performance guarantee.

## Improve Production Efficiency

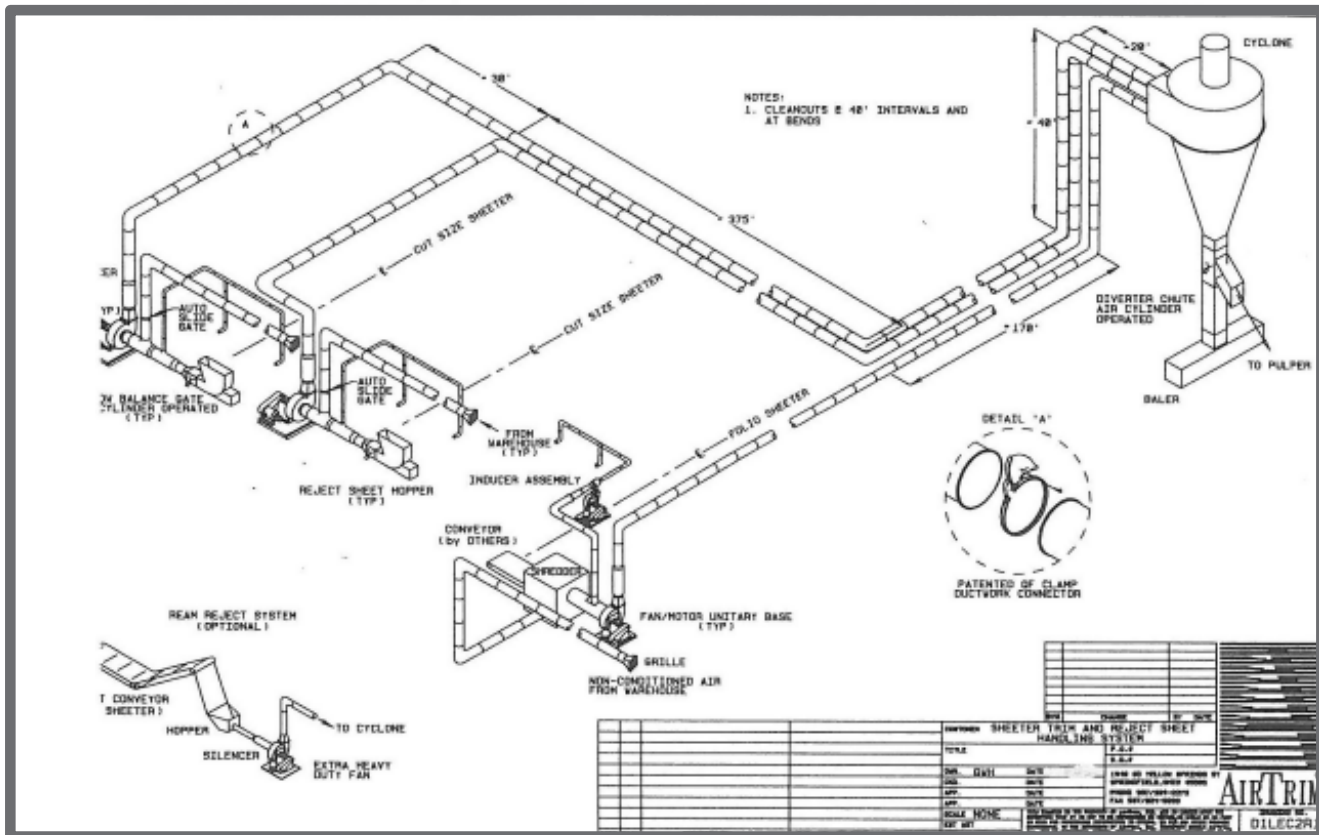
The pneumatic conveying of material saves your company money and improves production efficiency. By automating this process, labor intensive tasks and machine down times are eliminated, resulting in continuous, profitable production.

### Regain Valuable Floor Space

Automating the product or waste transport process eliminates floor and aisle clutter from dumpcarts, spools, material, and other production bottlenecks. Floor plans and equipment placement layouts are more efficient and free of potential safety hazards, allowing machine operators to move freely from task to task.

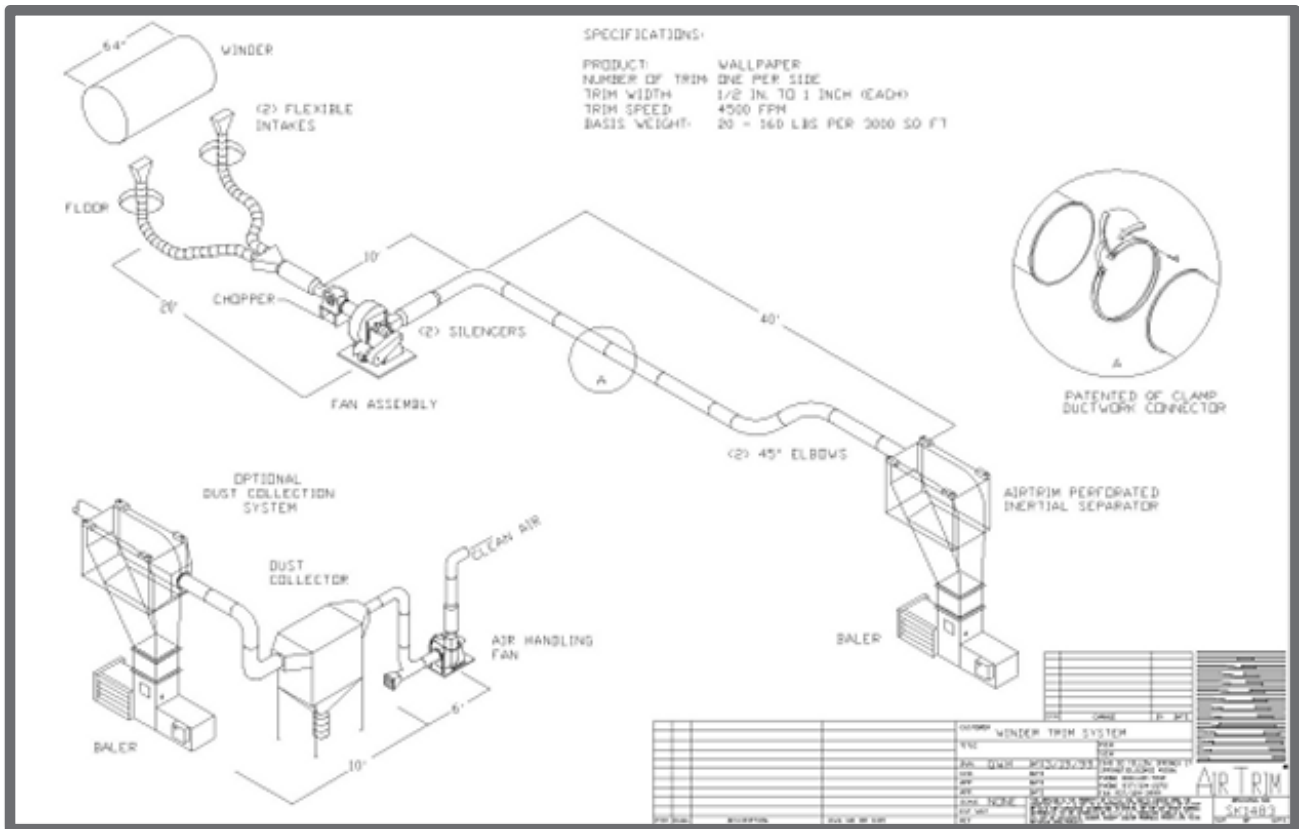
### Troubleshoot Your Existing System

Problem solving your system for noise, running speed, static, fluttering, and plugging need not result in a new system. Contract AirTrim's technical service experts to evaluate your system and make recommendations for retrofit components as a cost effective alternative. You will receive a complete, comprehensive report of the issues and proposed solutions.



This system is designed to capture multiple trim and rejected sheets at each sheeter to convey them to a baler or divert to the pulper. The folio sheets are mechanically conveyed into a shredder then on to the baler or pulper. Waste in excess of 1000lbs per minute is successfully conveyed with this system.

1701 Dalton Dr. • New Carlisle Ohio 45344  
 Tel : (888) 247-8746  
 Email: sales@airtrim.com  
 www.airtrim.com



The AirTrim System removes the trim from the winder. It relies on an in line cutter and fan to reduce the trim to manageable pieces, conveying them to an air/material separator for discharge into a baler. The dust generated by the slitters and trim cutters conveys from the separator into a continuous duty dust collector; the cleaned air returns to the mill.

## Dust Systems

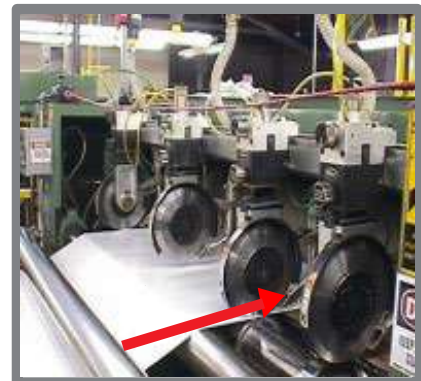
Industrial dust is a hot button for OSHA who has committed to increased plant inspections by both the State and Federal agencies. Their "Status Report on Combustible Dust National Emphasis Program" of October, 2009 notes that from October 2007 through June 2009 the average number of dust related violations per inspection were greater than 6.5 and the average penalty \$1,233 per violation. More information can be found on OSHA's website dedicated to combustible dust hazards located at [www.osha.gov/dsg/combustibledust/index.html](http://www.osha.gov/dsg/combustibledust/index.html).

AirTrim has partnered with Dantherm Filtration, a global supplier with over 50 years of experience in the dust, fume, and mist collection business, to provide pneumatic waste system dust collection units. These units exceed current dust collection standards.

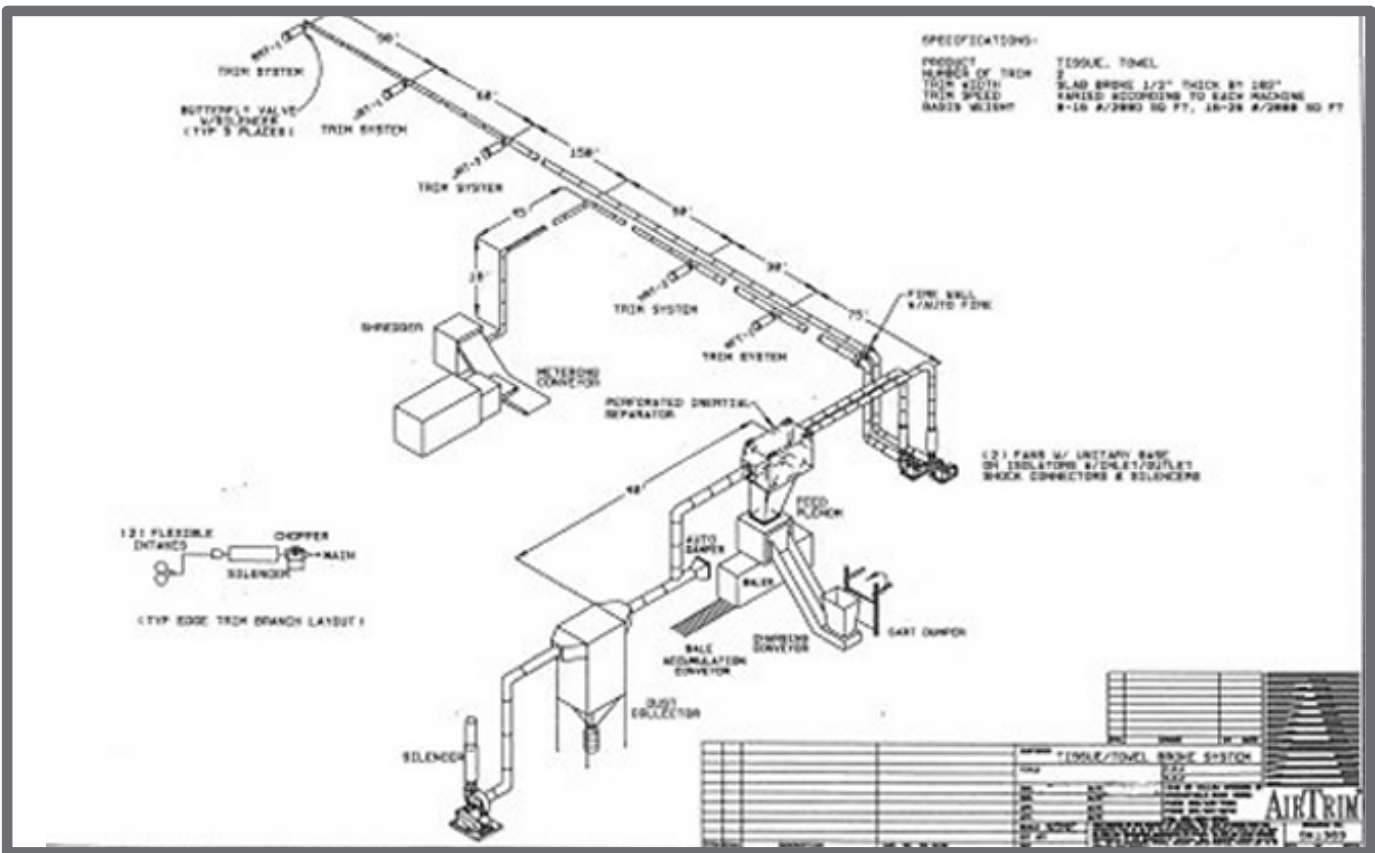


Installed dust removal system.

A Source Capture System collects dust at its source, the slitter knife, in slitting operations.



Intake hoods positioned at the slitter knife capture dust from the cut sheet, vacuuming it away through the re-positional flexible tubing to the vacuum unit.



This tissue/towel broke system conveys the trim from (5) machines and a shredder to the separator then on to the baler. The system also features a dust collector. Each trim line can be opened or closed with a valve as production dictates.

**PRODUCTS OFFERED**

- Air Filtration
- Balers
- Capped Silencers
- Choppers/Cutters
- Conveyors
- Diverter Chutes
- Duct
- Dust Bags
- Dust Collectors
- Dust Fans
- Fabric Separators
- Floor Sweeps
- Gaylord Covers
- Granulators
- Intakes
- In-line Silencers
- Jumbo Venturi/Inducers
- Material Handling Fans
- Motor Starters
- Rental Units
- Return Air Systems
- Separators
- Shredders
- Sound Enclosures
- Sound Jackets
- Static Eliminators



Installed paper trim removal system with dust-shrouded separator inside the plant. Note the box structure beyond the separator, which is a sound enclosure that houses the material handling fans.

Papermill 2023